

EFS-FTOBD2LT

HARDWARE INSTALLATION MANUAL





Thank you for purchasing the EchoMaster **EFS-FTOBD2LT**

EchoMaster Fleet Solution tracking products are designed to improve fleet safety, visibility, and compliance as well as helping to reduce operating costs with proactive maintenance notification.

Please ensure you read and understand all aspects of the manual before installing or using the EchoMaster products.



WHAT'S INCLUDED:

- ODB2 plug-and-play device
- Manual
- Serialized security zip tie

OPTIONAL ACCESSORIES

EFS-OB DYHAR ODB2 Y-Cable for discrete installations



EFS-OB DDHAR OBD2 Dual port cable used for GPS and camera installations





EFS-FTOBD2LT

INSTALLATION GUIDE

FEATURES

- Compliant with J1939 protocol
- Driver behavior detection
- True Odometer detection
- Vehicle VIN identification detection
- Fuel efficiency monitoring
- Internal battery
- Proactive vehicle maintenance monitoring
- Proactive vehicle maintenance monitoring
- OTAP- Wireless firmware updates
- Tamper Alert notification

PRIOR TO INSTALLATION

Prior to installation, please note the device's serial number. This number will be needed for activation and connection to your EchoMaster Fleet website. Please follow the instructions in the included activation card for final set up.



STEP 1: INSTALLATION PREPARATION INSTRUCTION

Locate the vehicle's OBD2 diagnostic communication port, the port will be located under the vehicle's dashboard area usually below the steering column or in the lower driver's side kick panel.

*Consult the vehicles owners manual for exact location

STEP 2: FITTING INSTRUCTIONS

IF USING THE OPTIONAL Y-CABLE (IF NOT SKIP TO THE NEXT PAGE)

Attach the EchoMaster EFS-FTOBD2LT device to one side of the Y-Cable Part # EFS-OBDYHAR.

Remove the vehicles OBD2 port and plug the factory communication port into the other side of the Y cable.

EchoMaster Accessory cables packages include two types of mounting brackets to replace the factory OBD2. 1) Standard OBD2 size 2) Ford vehicles with Smart OBD





Insert the EchoMaster EFS-FTOBD2LT device into the vehicle's diagnostic port firmly, ensuring the device makes a good connection.



STEP 3: FINALIZE YOUR INSTALL

COMPLETE THE INSTALLATION

Once the EFS-FTOBD2LD is installed start the vehicle's engine and let it run outside for five minutes, allowing the device time to read the vehicle's network and receive the identification number (VIN)

Note: Vehicle must be outside with an unobstructed view of the sky for its first location to be set in the application.

ADD THE SECURITY SEAL

EchoMaster provides a security zip tie to ensure the OBD2 device stays securely in place. Install the security zip tie around the device and the accessory harness and cut off the excess cable tie.



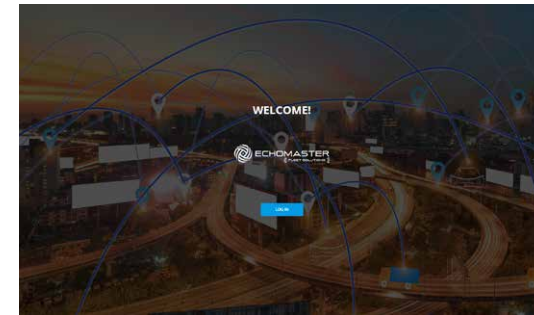
***We recommend recording the serial number located on the serial number security zip tie, on the serial number card located in the box, before installing it around the OBD2 device.**



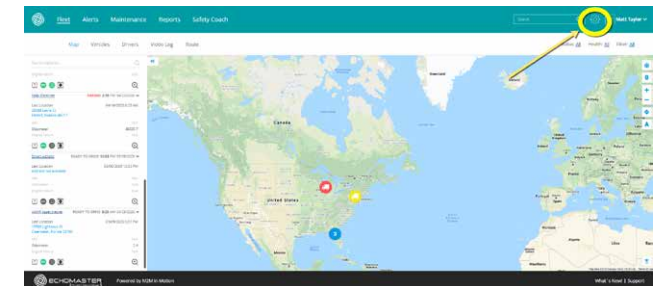
STEP 4:

ADD THE VEHICLE TO THE ECHOMASTER FLEET TRACKING WEBSITE

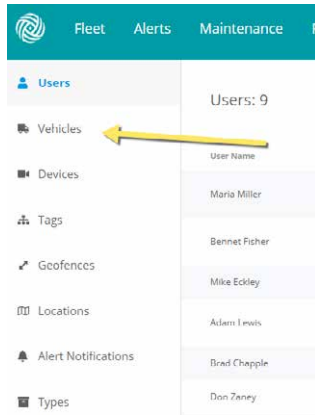
1. Login to emfleetmonitor.com



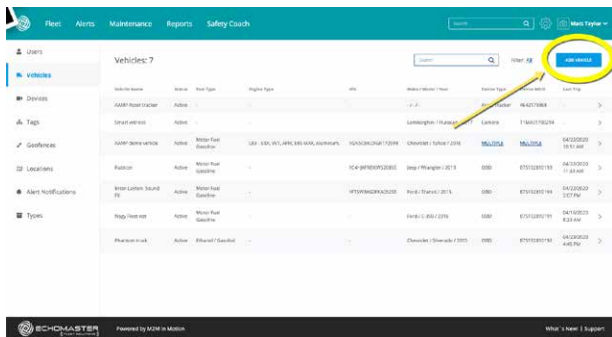
2. Click the settings gear in the upper right corner



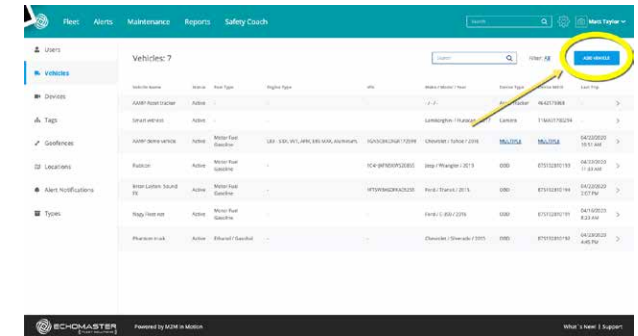
3. Select Vehicles from the left menu



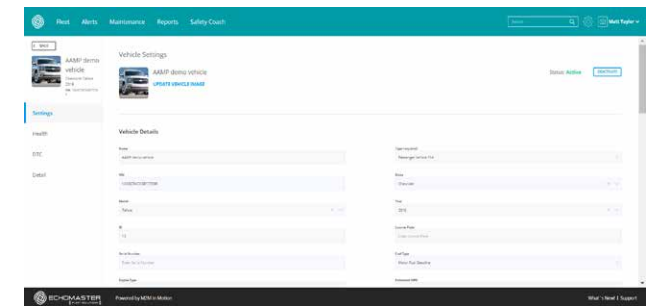
4. Select Add Vehicle from the upper right corner



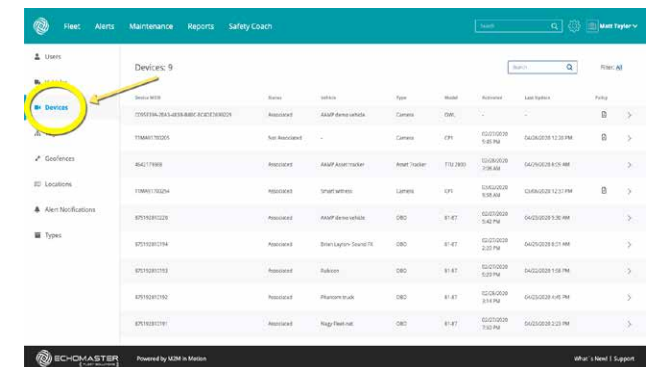
4. Select Add Vehicle from the upper right corner



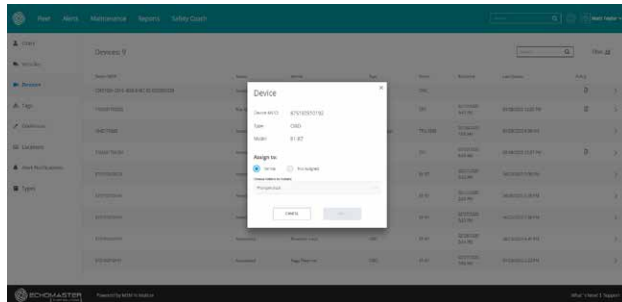
5. Fill out the vehicle's information and save



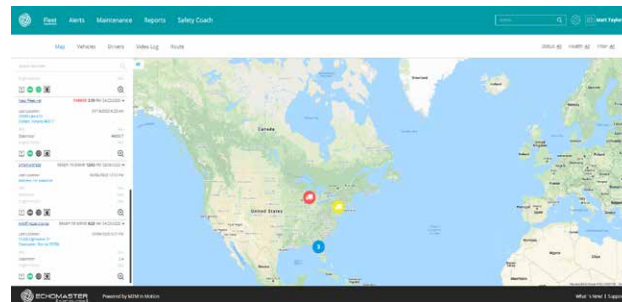
6. Select Devices from the left menu



7. In the list of devices, find the device you just installed. Click the ">" symbol on the right side to open that device, and assign it to the vehicle you just added.



8. Once the device has been assigned, click back to the map view to confirm that the location and status is correct for the vehicle that was just set up.



SPECIFICATION CHART

OPERATING VOLTAGE	8V to 24 v
BATTERY	300mah Li-ion polymer
CURRENT CAPACITY	110uA sleep mode,30mA active
SIZE	2.55 in x 1.92 in x 1.02 in
BAND OPERATION	Dual Band UMTS/HSDPA
HOST PROTOCOL	AT Commands UDP
CERTIFICATIONS	PTCRB, FCC



Phone – 866-931-8021

E-Mail – support@aampglobal.com



EchoMasterFleetSolutions.com