

EFS-FTOBD2HD

INSTALLATION MANUAL





Thank you for purchasing the EchoMaster EFS-FTOBD2HD

EchoMaster Fleet Solution tracking products are designed to improve fleet safety, visibility, and compliance as well as helping to reduce operating costs with proactive maintenance notification.

Please ensure you read and understand all aspects of the manual before installing or using the EchoMaster products.






WHAT'S INCLUDED:

- ODB2 plug-and-play device
- Manual
- Serialized security zip tie

REQUIRED ACCESSORIES

NOTE: CABLES ARE REQUIRED FOR ALL HEAVY DUTY TRUCKS THAT HAVE A COMMUNICATION PORT OTHER THAN THE *ODB2 STYLE. IT IS IMPORTANT TO PROVIDE THE VEHICLES IDENTIFICATION NUMBER (VIN) WHEN ORDERING THE EFS-OB2HD MODULE TO CONFIRM THE VEHICLES CABLE TYPE OR VISUALLY INSPECT THE VEHICLE AND REQUEST THE REQUIRED CABLE.

6-9 PIN VEHICLE ADAPTER (EFS-6PHAR + EFS-PT1YHAR)	
9 PIN TYPE 1 BLACK CABLE (EFS-PT1YHAR)	
9 PIN TYPE 2 GREEN CABLE (EFS-PT2YHAR)	



EFS-FTOBD2HD INSTALLATION GUIDE

FEATURES

- Autodetect for J1708/J1939 protocols
- Driver behavior detection
- True odometer detection
- Vehicle VIN identification detection
- Fuel efficiency monitoring
- Internal battery
- Proactive vehicle maintenance monitoring
- High voltage supported
- Bluetooth BLE for AOBRD/ELD
- OTAP-Wireless firmware updates
- Tamper Alert notification

STEP 1: INSTALLATION PREPARATION INSTRUCTION

Locate the vehicle's diagnostic communication port, the port will be located under the vehicle's dashboard area usually below the steering column or in the lower driver's side kick panel.

STEP 2: FITTING INSTRUCTIONS

PREPARE THE HARDWARE

Attach the EchoMaster EFS-FTOBD2HD device onto the accessory harness required for the specific vehicle you are working on.





CONNECT THE INTEGRATION CABLE TO THE VEHICLE

Remove the vehicle's communication port and attach it to the accessory cable's male connector.



SECURE THE CABLES

Once everything is connected, mount the new cable head using the screw-down mount or the flanged collar to the dashboard of the vehicle. Mount the EFS-FTOBD2HD device up in the dash ensuring **that it has a clear line of sight of the sky and mounted away from any electrical sources. Be sure the device will not interfere with the moving vehicle controls.**

STEP 3:

FINALIZE YOUR INSTALL

COMPLETE THE INSTALLATION

Once the EFS-FTOBD2HD is in place, start the vehicle's engine and let it run outside for five minutes, allowing the device time to read the vehicle's network and receive the identification number (VIN).

Note: the vehicle must be outside with an unobstructed

ADD THE SECURITY SEAL

EchoMaster provides a security zip tie to ensure the EFS-FTOBD2HD device stays securely in place. Install the security zip tie around the device and the accessory harness and cut off the excess cable tie.



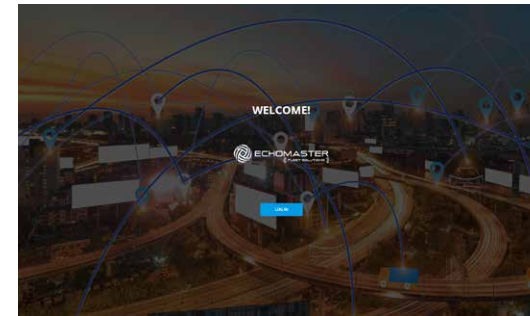
We recommend recording the serial number located on the serial number security zip tie, on the serial number card located in the box, before installing it around the OBD2 device.



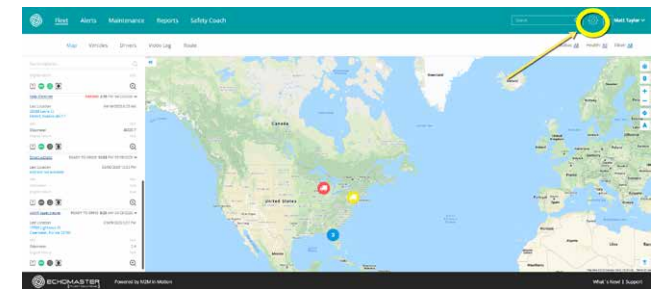
STEP 4:

ADD THE ASSET TO YOUR WEBSITE APPLICATION

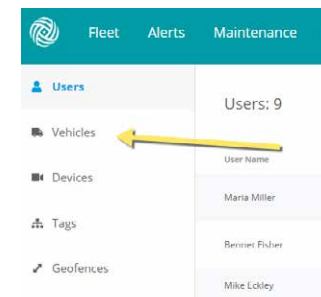
1. Login to emfleetmonitor.com



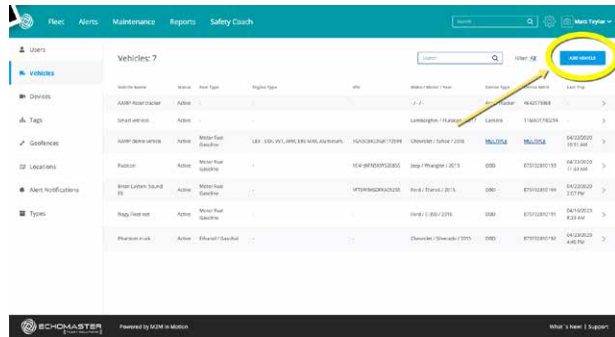
2. Click the settings gear in the upper right corner



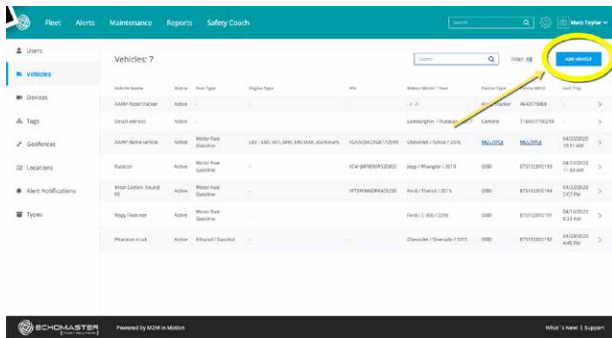
3. Select Vehicles from the left menu



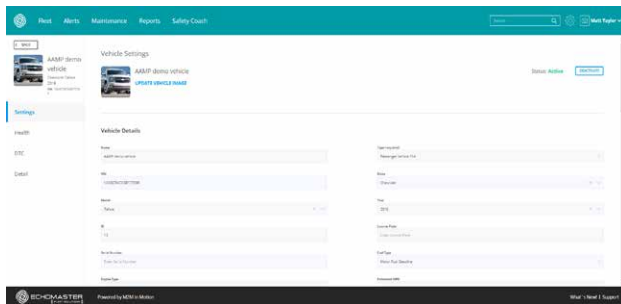
4. Select Add Vehicle from the upper right corner



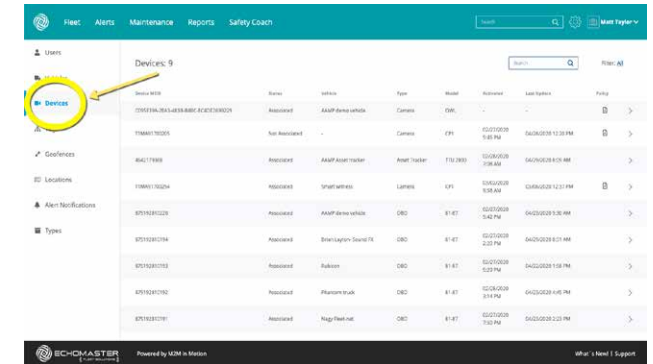
4. Select Add Vehicle from the upper right corner



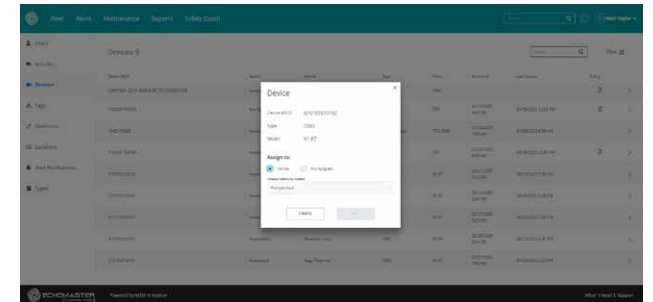
5. Fill out the vehicle's information and save



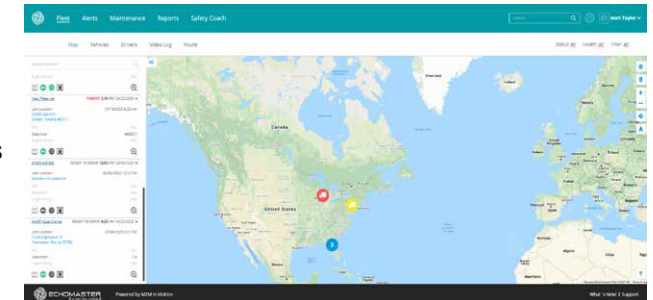
6. Select Devices from the left menu



7. In the list of devices, find the device you just installed. Click the “>” symbol on the right side to open that device, and assign it to the vehicle you just added.



8. Once the device has been assigned, click back to the map view to confirm that the location and status is correct for the vehicle that was just set up.



STEP 5:

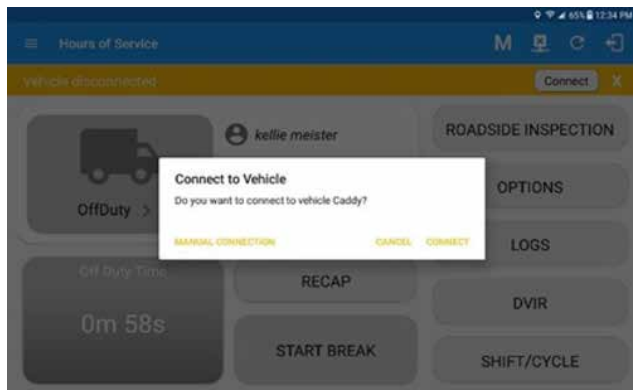
IF YOU PURCHASED THE OPTIONAL ELD TRACKING ADD-ON, ADD THE VEHICLE TO THE ELD TRACKING APPLICATION (POWERED BY M2M IN MOTION)

OVERVIEW

1. Start the vehicle and leave it running
2. Open the M2M in Motion APP (Available in the Google Play Store and the Apple App Store)
3. Login to the M2M in Motion ELD APP using a driver user account
4. Choose the vehicle you want to connect to
5. On the main APP dashboard, tap the “Connect” button which is located below the APP header to display the “Connect to Vehicle” dialog box
6. At this point, two options are present in order to establish a connection to the VBUS device: Manual Connection and Auto Connection.

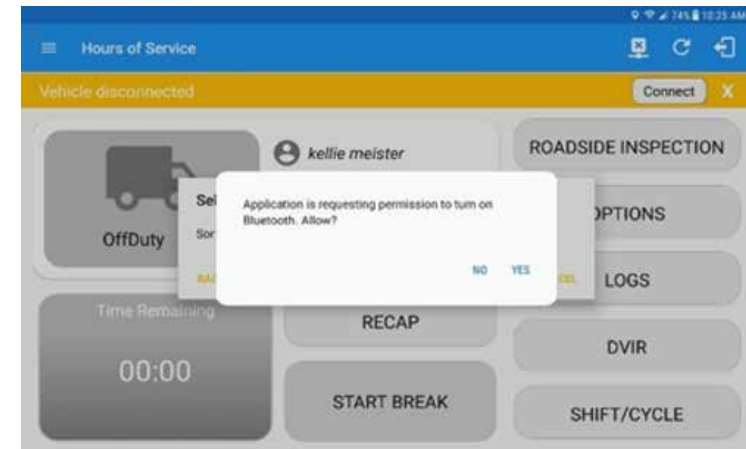
MANUAL CONNECTION

1. Tap on the “Manual Connection” button

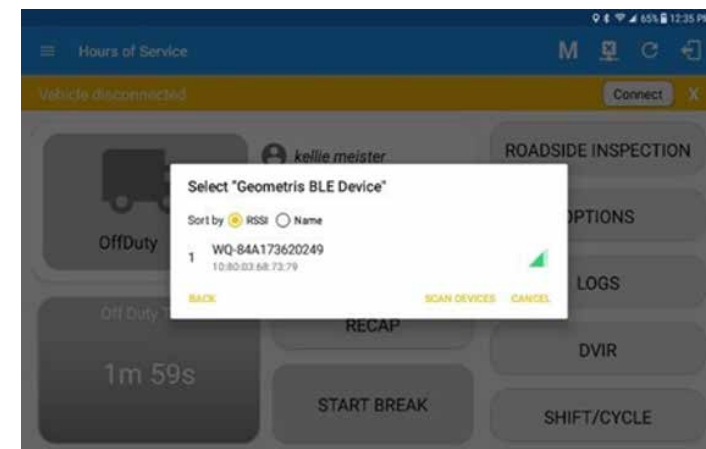


2. If the Bluetooth of the device is disabled, the “Bluetooth Permission Request” dialog box will be displayed

Tap on the YES button to Enable the Bluetooth device

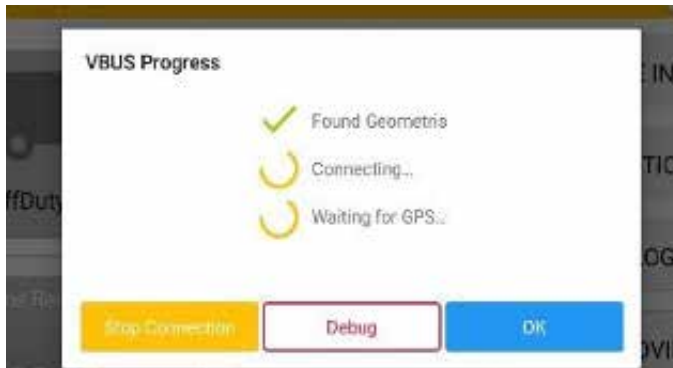


3. Choose the correct Bluetooth device from the list



4. It will then display the VBUS Progress dialog box upon establishing a connection to the selected ELD device along with a “Stop Connection” and “Ok” buttons

- Tap “Stop Connection” to stop establishing VBUS
- Tap OK button to hide the VBUS Progress dialog




5. If the VBUS connection results in an error (given the following situations below), an error dialog box will display
 VBUS Connection Error
 Interrupted Internet Connection
 VBUS Power Failure



Note: The app will automatically disconnect from the device after attempting to connect for 1 minute and 30 seconds without receiving any data from the VBUS device

Upon establishing a connection to the VBUS device you should hear a tone letting you know that the device is now connected.

To check if you are connected, navigate to the Main Dashboard and the VBUS status indicator should be displayed as “Connected”  which is located on the app header.

The device and the application are now connected.

AUTO CONNECTION

1. Tap on the Connect button
2. The VBUS Progress dialog box will then display
3. Upon establishing a connection to the VBUS device, you should hear a tone letting you know that the device is now connected.

Prerequisites to successfully perform an Auto Connection

- Create a Pre-configured device in the Portal’s Equipment Management Page or in the App’s Manage
- Vehicles/Trailers screen
- Set the ELD configurations

Note: Only users with Asset admin roles can create equipment in the app.

SPECIFICATION CHART

OPERATING VOLTAGE	8V to 24 v
BATTERY	300mah Li-ion polymer
CURRENT CAPACITY	110uA sleep mode,30mA active
SIZE	2.55 in x 1.92 in x 1.02 in
BAND OPERATION	Dual band UMTS/HSDPA
HOST PROTOCOL	AT commands, UDP
CERTIFICATIONS	ELD, PTCRB, FCC



Phone – 866-931-8021

E-Mail – support@aampglobal.com



EchoMasterFleetSolutions.com