



P-BUA-ESCAPE

Wiring Harness for Backup Alarm 2020-2021 Ford Escape

INSTALLATION MANUAL



ECHOMASTER
PRO

Thank you for purchasing the
P-BUA-ESCAPE

Table of Contents

Page 3 - Tools Required For Installation

WHAT'S INCLUDED:

- Vehicle Specific Wire Harness (P-BUA-ESCAPE)
- 6" Cable Ties
- Adhesive Cable Tie Mounts
- 1/2" Self Tapping Screw

COMPATIBLE ACCESSORIES:

- 97dB Backup Alarm (BUA-97C)
- 97dB White Noise Backup Alarm (BUA-97WNC)

TOOLS REQUIRED:



- 1. 7mm Nut-setter
- 2. 10mm Nut-setter
- 3. T-25 Bit
- 4. #2 Phillips Bit
- 5. Knife
- 6. Diagonal Cutters
- 7. Wire Strippers/Crimper's
- 8. Panel Removal Tool
- 9. Impact Drill

STEP 1:

Remove the following cargo space panels

Floor Panel

Left and Right cargo space storage compartments and their contents

Liftgate striker cover (see photo in step 2 for reference)



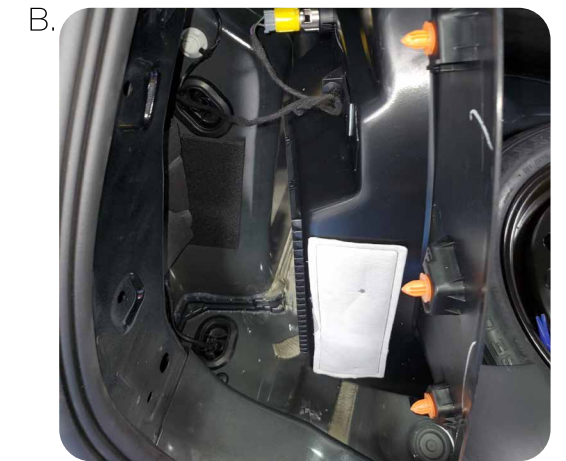
STEP 2:

Use a T-25 bit to remove the cargo space tie down bolts and a 7mm bit to remove the cargo space scuff plate trim panel bolts. Then use a panel removal tool to pry up the clips that are holding the scuff plate in place so it may be removed.



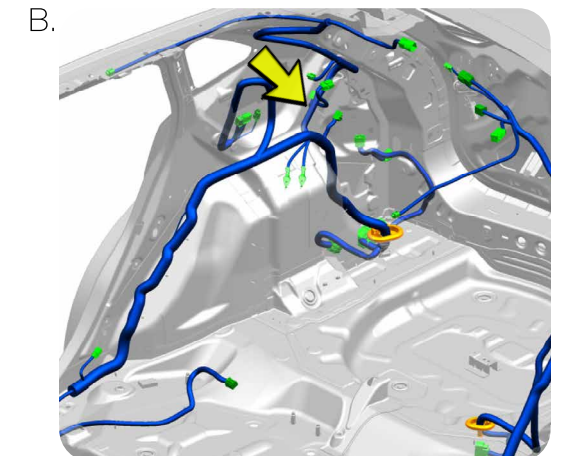
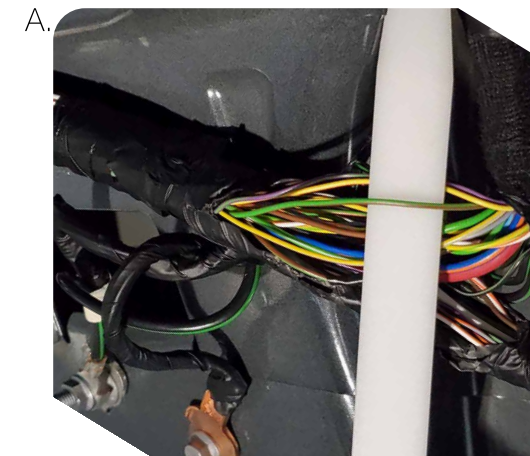
STEP 3:

Use a panel removal tool to unclip the the passenger (A.) and driver (B.) side rear quarter panels



STEP 4:

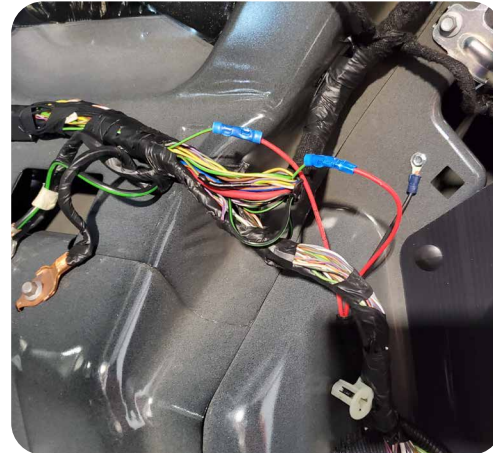
Locate the vehicle's Green/Brown (A.) wire that is located in the harness above the rear passenger wheel well (B.)



Rear of Vehicle 

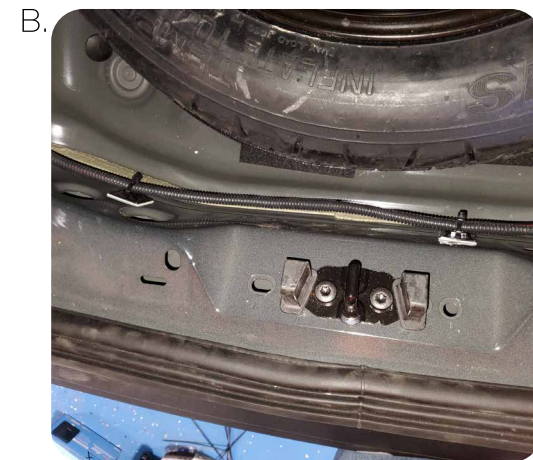
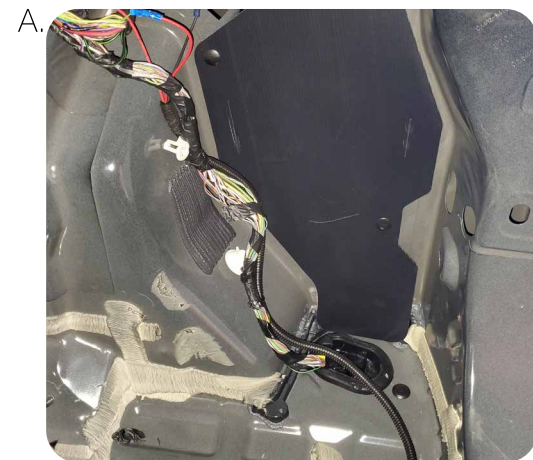
STEP 5:

Cut the vehicle's reverse wire in half and splice in/ crimp the backup alarm harness to the vehicle's wiring. Then use the supplied 1/2" self tapping fastener to ground the ring terminal of the harness to the vehicle chassis.



STEP 6:

Route the backup alarm harness across the backside the cargo space compartment from the passenger side (A.) to the driver side using the provided cable ties and cable tie mounts (B.).



STEP 7:

Use a knife to make a small incision in the driver side floor grommet, so that the backup alarm harness connector may pass through it



STEP 8:

Use an impact drill and 10mm nut-setter to install a compatible backup alarm on the underside of the vehicle. Then plug the backup alarm connector into the mating connector on the P-BUA-ESCAPE harness and secure any loose wiring.

Note: (2) 10mm TEK screws are provided with the compatible backup alarm



STEP 9:

Test the backup alarm before re-installing all factory panels and load space compartments.
Note: Be careful not to pinch any wires when re-installing panels.



Phone: 866.931.8021 (Option 3)
Email: support@aampglobal.com

EchoMaster is a Power Brand of AAMP Global

EchoMaster.com